

LINAIRE® Flex Micro Side Bend Linear Light

Diminutive side-bending architectural light for accents, millwork, and tight spaces. Water resistant with precision light quality and full diffusion for a dotless look.

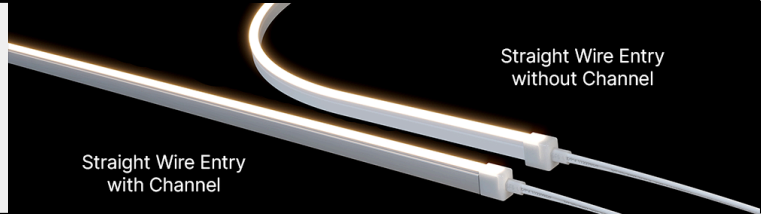
Date _____

Project Notes _____



FEATURES

- Side-bending for curved architectural details
- Very small fixture with no visible dots
- Water resistant for indoor and outdoor use (IP65)
- 90+ CRI
- Field cuttable, every 1 inch (IP65)



ORDERING CODES

Order spools, and components for field assembly

HYBRID ORDERING CODE (OPTIONAL)

Soldered Wire Lead and Connection Options

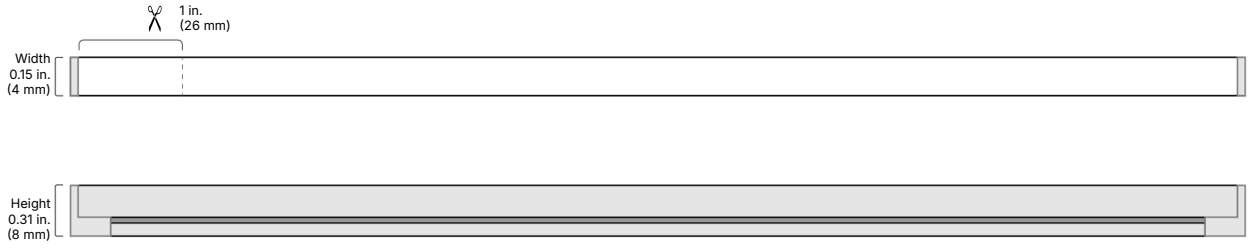
DI	Voltage	Model	Series	CCT	Length	Wire Entry	Input Wire Color, Length, and Connection			Output Wire Color, Length, and Connection		
							Color & Type	Length	Connection	Color & Type	Length	Connection
	24V (24V VoIt)	MSE	LIN	24 (2400K) 27 (2700K) 30 (3000K) 35 (3500K) 40 (4000K)	016 (16 feet wet location) CSTM_ (__in.) wet location	STE (Straight Wire Entry)	WH (White CL2 - Default)	36l (36 in. - Default)	BW (Bare Wire - Default)	*blank* (No Wire - Default)		
							BL (Black CL2)	__ in.	DC (Barrel)	WH (White CL2) BL (Black CL2)	__ in.	BW (Bare Wire - Default) DC (Barrel)

GENERAL SPECIFICATIONS (ALL MODELS)

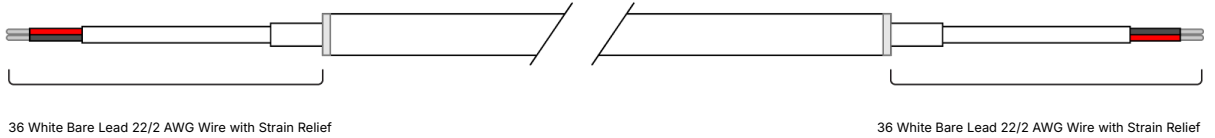
Voltage	24VDC
Wattage	1.9W/ft.
2400K	65 Lm/ft.
2700K	66 Lm/ft.
3000K	72 Lm/ft.
3500K	72 Lm/ft.
4000K	69 Lm/ft.
Cut Points	1 in.
Dimmable	Yes
Max Run (ft.)	16.4 ft.
CRI	90+
Dimensions	16.4 x 0.15 x 0.31 in. (L x W x H)
TM-21 (LM-80)	>50,000 hours
Environment	Outdoor / Wet Location (IP65)
Lead Wire A	36 in. White Bare Lead 22/2 AWG Wire with Strain Relief
Lead Wire B	36 in. White Bare Lead 22/2 AWG Wire with Strain Relief
LED Chips	72/ft.
Chip Type	2216
Certification	UL Listed 2108
Limited Warranty	5 Year Limited Warranty

MECHANICAL DIAGRAMS

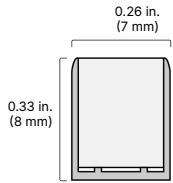
24V-MSE-LIN



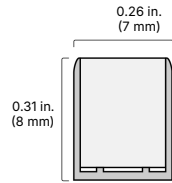
CONNECTIONS



24V-MSE-LIN in
LINAIRE Flex Micro Side Bend Char



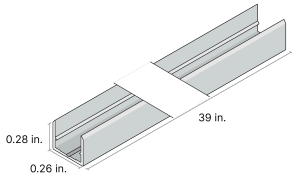
24V-MSE-LIN in



ACCESSORIES

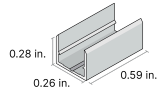
DI-LIN-MSE-MTCH-39

LINAIRE Flex, Micro Side Bend, Mounting Channel, Aluminum



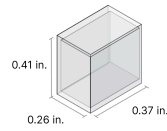
DI-LIN-MSE-MTCL-2

LINAIRE Flex, Micro Side Bend, Mounting Clips, 2 Pack



DI-LIN-MSE-EC

LINAIRE Flex, Micro Side Bend, End Cap Pair, 2 open end caps, 2 closed end caps



DELIVERY OPTIONS

- **Factory + Field (Hybrid) (IP65)**
Fastest order fulfillment. Field connectors and accessories not included.

- **Factory Assembly (IP65)**
Onsite modifications with factory connection. Additional accessories not included.

RECOMMENDED POWER SUPPLIES

For additional Power Supply information, refer to individual Specification Sheet data at diodeled.com.

- OMNIDRIVE X
- VLM
- MAGNETIC DIMMABLE DRIVER
- 0-10V
- LUTRON
- MEANWELL
- OMNIDRIVE
- OMNIDRIVE BASICS
- SWITCHEX

OMNIDRIVE® X DIMMABLE DRIVER

For additional information visit:

<https://www.diodeled.com/omnidrive-reg-x-electronic-and-0-10v-dimmable-driver.html>

Versatile driver for most high-performance dimming on ELV, TRIAC, and 0-10V systems.



SKU	GENERAL SPECS	INPUT VOLTAGE / FREQUENCY	OUTPUT VOLTAGE & MAXIMUM LOAD	MINIMUM LOAD
DI-ODX-24V120W-J	Dimmable 8.66 x 3.7 x 1.57 in.	120-277VAC, 50/60Hz	24V / 120W	None
DI-ODX-24V200W-J	Dimmable 10.24 x 4.13 x 1.77 in.	120-277VAC, 50/60Hz	24V / 200W	None
DI-ODX-24V30W	Class 2, Dimmable 6.1 x 2.1 x 0.8 in.	120-277VAC, 50/60Hz	24V / 30W	None
DI-ODX-24V30W-J	Class 2, Dimmable 6.5 x 3.7 x 1.57 in.	120-277VAC, 50/60Hz	24V / 30W	None
DI-ODX-24V60W	Class 2, Dimmable 7 x 2.4 x 1 in.	120-277VAC, 50/60Hz	24V / 60W	None
DI-ODX-24V60W-J	Class 2, Dimmable 7.4 x 3.7 x 1.57 in.	120-277VAC, 50/60Hz	24V / 60W	None
DI-ODX-24V96W	Class 2, Dimmable 9 x 2.7 x 1.7 in.	120-277VAC, 50/60Hz	24V / 96W	None
DI-ODX-24V96W-J	Class 2, Dimmable 8.66 x 3.7 x 1.57 in.	120-277VAC, 50/60Hz	24V / 96W	None
DI-AWNAUX-ODX-24V96W-LPS3R	Class 2, Dimmable 10.79 x 7.34 x 2.36 in.	120-277V	24V / 96W	None
DI-AWNAUX-ODX-24V60W-LPS3R	Class 2, Dimmable 10.79 x 7.34 x 2.36 in.	120-277V	24V / 60W	None
DI-AWNAUX-ODX-24V30W-LPS3R	Class 2, Dimmable 10.79 x 7.34 x 2.36 in.	120-277V	24V / 30W	None
DI-AWN-ODX-24V96W-J	Class 2, Dimmable 8.66 x 3.7 x 1.57 in.	120-277V	24V / 96W	None
DI-AWN-ODX-24V60W-J	Class 2, Dimmable 7.4 x 3.7 x 1.57 in.	120-277V	24V / 60W	None
DI-AWN-ODX-24V30W-J	Class 2, Dimmable 6.5 x 3.7 x 1.57 in.	120-277V	24V / 30W	None

VLM SERIES CONSTANT VOLTAGE DRIVER

For additional information visit:

<https://www.diodeled.com/vlm-series-led-driver.html>

Compact driver for on/off, PWM dimming, and color-changing applications.



SKU	GENERAL SPECS	INPUT VOLTAGE / FREQUENCY	OUTPUT VOLTAGE & MAXIMUM LOAD	MINIMUM LOAD
VLM100W-24	Class 2 5.38 x 1 x 0.77 in.	120 / 277VAC 47 - 63Hz	24V / 96W	None
VLM100W-24-LPM	Class 2 8.19 x 2.94 x 1.31 in.	120 / 277VAC 47 - 63Hz	24V / 96W	None
VLM100W-24-LPS	Class 2 11.25 x 3.75 x 1.9 in.	120 / 277VAC 47 - 63Hz	24V / 96W	None
VLM100W-24-LPS3R	Class 2 10.79 x 7.34 x 2.36 in.	120 / 277VAC 47 - 63Hz	24V / 96W	None
VLM200W-24-LPL	Class 2 13.5 x 4.5 x 2.38 in.	120 / 277VAC 47 - 63Hz	24V / 100W (X2)	None
VLM60W-24	Class 2 5.1 x 0.75 x 0.77 in.	120 / 277VAC 47 - 63Hz	24V / 60W	None
VLM60W-24-LPM	Class 2 8.19 x 2.94 x 1.31 in.	120 / 277VAC 47 - 63Hz	24V / 60W	None
VLM60W-24-LPS	Class 2 11.25 x 3.75 x 1.9 in.	120 / 277VAC 47 - 63Hz	24V / 60W	None
VLM60W-24-LPS3R	Class 2 10.79 x 7.34 x 2.36 in.	120 / 277VAC 47 - 63Hz	24V / 60W	None

RECOMMENDED CONTROLLERS

For additional Controller information, refer to individual Specification Sheet data at diodeled.com.

CASAMBI® CONTROLLERS

The CASAMBI controllers will remotely control your lighting through the app - downloadable for IOS & Android.

For additional information visit:

<https://www.diodeled.com/casambi-controllers-3020.html>



SKU	DESCRIPTION
CBU-A2D	CASAMBI A2D 2 Channel 0-10V/DALI Controller
CBU-ASR	CASAMBI ASR 0-10V Controller
CBU-PWM4	CASAMBI PWM4 Single Color Dimming Controller
DI-CBU-PWM5-PRO	Casambi CBU-PWM5-Pro RGB/W/WW Applications, 5 x PWM for constant voltage lights, 4 amps/CH max

TOUCHDIAL™ CONTROL SYSTEMS

The TOUCHDIAL™ zone control system controls single color dimming, tunable white, and color changing LED lighting via mobile device and additional TOUCHDIAL controls.

For additional information visit:

<https://www.diodeled.com/touchdial-wifi-color-control-system.html>



SKU	DESCRIPTION
DI-RF-REC-CV-A	TOUCHDIAL Color Control System - WiFi Receiver
DI-RF-REC-CV-SC	TOUCHDIAL Mini Receiver - Single Channel and Zone
DI-RF-REM-DIM-1	TOUCHDIAL Mini Remote - Single Zone
DI-RF-REM-DIM-5	TOUCHDIAL Remote Dimmer 5-Zone Dimmer Control
DI-RF-REM-RGBW-1	TOUCHDIAL Mini Remote RGB(W) - Single Zone
DI-RF-REM-RGBW-4	TOUCHDIAL Color Control System - RGB/RGBW 4-Zone Remote Controller
DI-RF-REM-TW-4	TOUCHDIAL Color Control System - Tunable White 4-Zone Remote Controller
DI-RF-WMT-DIM	TOUCHDIAL Wall Dimmer - Single Zone
DI-RF-WMT-RGBW	TOUCHDIAL RGB(W) Wall Control - Single Zone
DI-RF-WPD-DIM-1	TOUCHDIAL Paddle Dimmer - Single Zone
DI-RF-WPD-DIM-2	TOUCHDIAL Paddle Dimmer - Two Zone
DI-WIFI-RF-TRMS	TOUCHDIAL Color Control System - WiFi Hub
DI-RF-REM-TW3-4	TOUCHDIAL Color Control System, 3-Anchor Tunable White 4-Zone Remote Controller

CERTIFICATIONS

Safety

- UL Listed 2108 Low Voltage Lighting System / Low Voltage Luminaire. UL 1598 / CSA 250.0-08, UL 8750. UL 879 / CAN/CSA-C22.2 no. 207-M89. Certified for United States and Canada. File # E469769.
- UL Listed Field Cuttable.
- Approved for storage areas of clothes closets per NEC 410.16.A.1,3 and 410.16.C.1,3,5

Environment

- IP65 - Field Connections and Terminations
- IP67 - Stock Spools and Factory Assembled Fixtures
- Ambient Temperature: -4 ~ 122°F (-20 ~ 50°C)
- Operating Temperature: -4 ~ 176°F (-20 ~ 80°C)

Performance

- DI-24V-TE-LIN3: Can be used to comply with TITLE 24 Part 6 High Efficacy Lighting LED requirements - JA8-2016-2022-E
- LED chip data measured in accordance to IES LM-80-08.
- Photometric & Colorimetry data measured in accordance to IES LM-79-08, in Elemental LED's Innovation Lab.

Safety / Warnings / Disclosures

1. Install in accordance with national and local electrical code regulations.
2. This product is intended to be installed and serviced by a qualified, licensed electrician.
3. Only use copper wiring. Use wires rated for at least 176°F (80°C) and certified for use with external connection of electrical equipment.
4. Each maximum run requires a dedicated power feed from the driver. Do not extend beyond the recommended maximum run length.
5. Tape light, attached wire leads, and additional extension cables, connectors, etc., are not rated for in-wall installation unless otherwise noted. Tape light and attached wire leads are field-cuttable.
6. Ensure applicable wire is installed between driver, fixture, and any controls in-between. When choosing wire, factor in voltage drop, amperage rating, and type (in-wall rated, wet location rated, etc.). Inadequate wire installation could overheat wires, and cause fire.
7. Do not install in environment where excessive heat may exist (ex. close proximity to fireplace, etc.) See Ambient Temperature ratings
8. Do not install indoor LED tape light products in outdoor / wet location environments. Only wet location tape light models are rated for outdoor / wet locations.
9. Do not modify product beyond instructions or warranty will be void.
10. Tape light must be handled with care. Excessive handling, bending, and pressure may damage the product, voiding the warranty.
11. Actual color may vary from what is pictured on this sheet and other print materials due to the limitations of photographic processes.
12. We reserve the right to modify and improve the design of our fixtures without prior notice. We cannot guarantee to match existing installed fixtures for subsequent orders or replacements in regards to product appearance, CCT, or lumen output.

LIMITED WARRANTY

- 5 Year Limited Warranty

This warranty does not include the additional accessories referenced in this specification sheet. Complete warranty details for fixtures and additional accessories are available at www.diodeled.com/limited-warranty/ within the Policies section. For warranty related questions please contact product support.

Consumer's Acknowledgment

Elemental LED, Inc. stands behind its products when they are used properly and according to our specifications. By purchasing our products, the purchaser agrees and acknowledges that lighting design, configuration and installation is a complex process, wherein seemingly minor factors or changes in layout and in-field adjustments can have a significant impact on an entire system. Choosing the correct components is essential. Elemental LED is able to work with the original purchaser to make an appropriate product selection to the extent of the limited information that the customer can provide, but it is virtually impossible for Elemental LED to design a system that foresees every unknown factor. For this reason, this Warranty does not cover problems caused by improper design, configuration or installation issues. Any statement from a Elemental LED employee or agent regarding a customer's bill of goods and/or purchase order is NOT an acknowledgment that the products purchased are designed and configured correctly. The purchase agrees and acknowledges that it is the customer's responsibility to adhere strictly to all information contained in the Product Specification Sheets.

There is often more than one way to design, configure and layout an LED lighting application properly to achieve the same lighting effect. Elemental LED strongly recommends that licensed professionals be used in the design and installation of lighting systems that include Elemental LED products. The specifications include important information that a designer and installer should carefully review and strictly follow. Qualified designers and certified and/or licensed installers, with access to the final installation environment, customer goals, and Elemental LED product specifications can make the requisite decisions appropriate for a successful finished lighting application.

- Lumen value measured in accordance to IES LM-79-08. LED chips have a luminous flux range with a tolerance of +/- 5%.
- Each maximum run requires a dedicated power feed from the driver. Do not extend beyond the recommended maximum run length. Max run may exceed Class 2 limit. Actual wattage may differ from calculated wattage due to voltage drop across run.
- Do not install product in an environment outside the listed ambient temperature. Exceeding the maximum ambient temperature may damage LED chips, reduce the total lamp life, lumen output, and/or adversely impact color consistency.
- Actual efficacy value is dependent to specified LED driver (power supply). An estimated efficacy value can be calculated as follows: Lumen value divided by average power consumption per foot.
- Operating temperature is measured according to the minimum and maximum ambient temperature environment.